

CVW 3700

Concealed Vent Window



Exterior



Interior



Features:

- ANSI/AAMA HC70, AW70
- Life Cycle Tested
- 2" Frame Depth
- Screw-Spline Frame Joinery
- Mitered Clip, epoxy and Stake Joinery
- Pour & Debridge Thermal Break
- Field Glazing
- EPDM Gaskets
- 1" Glass Thickness
- Black or Clear Handles
- Heavy Duty 4-Bar Hinges
- Equal Frame Legs
- Anodized & Painted Finishes
- Optional Fiberglass or Aluminum Screens with Frame finished to match window

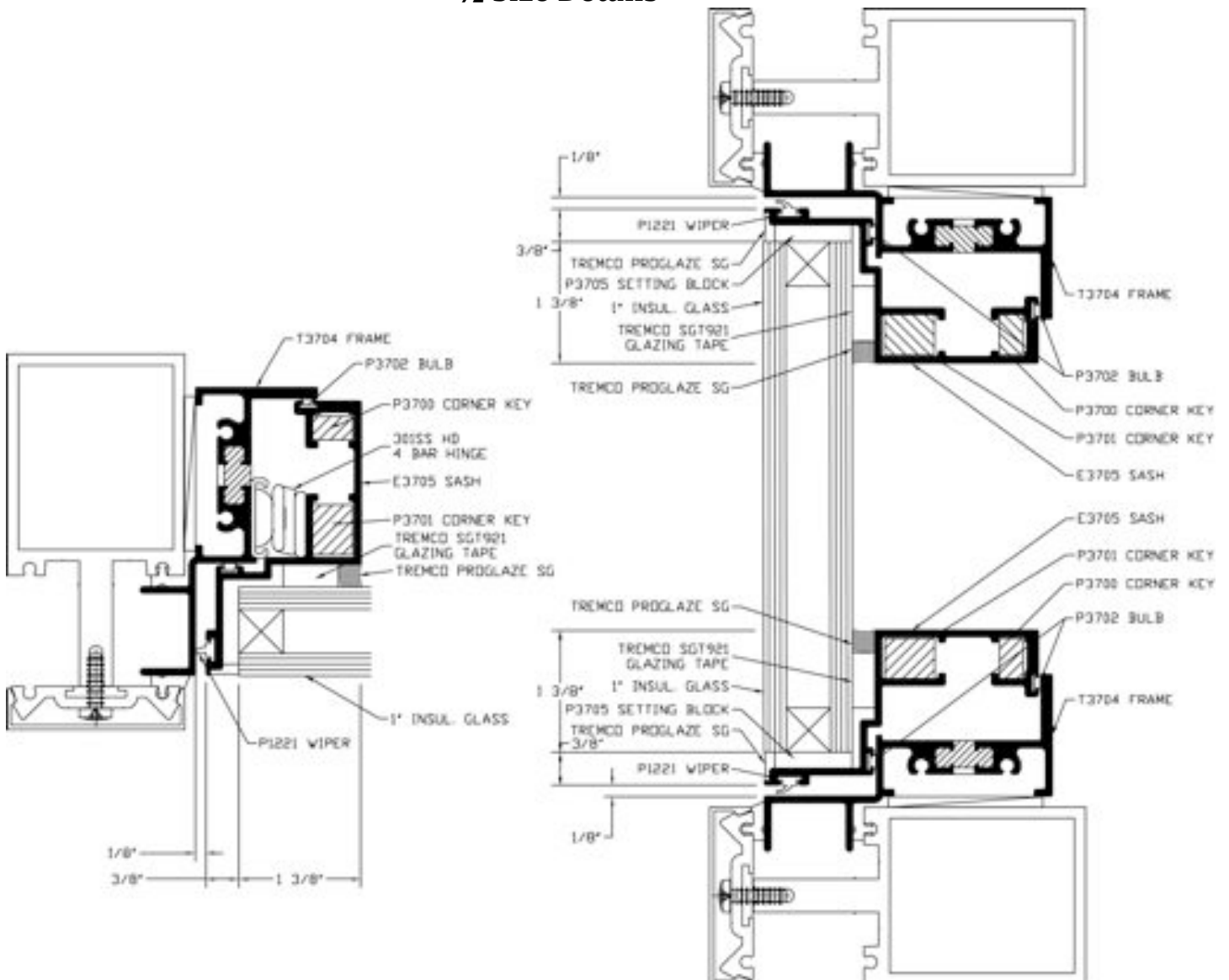


Heavy Duty 4-Bar Hinge



Cam Lock

1/2 Size Details



CVW3700 – Concealed Vent Window

Guide Specifications

General

Description

Furnish all necessary materials, labor and equipment for the complete installation of aluminum windows as shown on the drawings and specified herein.

Project-out vent windows shall be CVW3700 (1 7/8" x 3 1/4") as manufactured by EZ Vent in Rockford Michigan. Whenever substitute products are to be considered, supporting technical literature, samples drawings and performance data must be submitted ten (10) days prior to bid in order to make a valid comparison of the products involved.

Test reports certified by an independent laboratory must be made available upon request.

Performance Requirements

Air infiltration shall not exceed .10 CFM/Ft² when tested in accordance with ASTM E-283 at a test pressure of 6.24 PSF.

There shall be no uncontrolled water entry when tested in accordance with ASTM E-331 "Water Penetration of Exterior Windows, Curtainwalls and Doors by Uniform Static Air Pressure Difference" at a test pressure of 12 PSF.

Structural performance per ASTM E-330 shall be based on a maximum allowable deflection of L/175 of the span. The system shall perform to those criteria under a design test pressure of 70 PSF.

Windows shall meet the performance specification AAMA/NWDA 101/I.S.2-97 requirements for AW-70 and HC-70 ratings.

Products

Construction

The 3 1/4" deep, glazed-in-place frame is fabricated from extruded aluminum, with .075" minimum wall thickness. Joints are coped, double screw fastened, and sealed with small joint sealer.

The sash is fabricated from extruded aluminum, with .075" minimum wall thickness. Mitered hairline joints are mechanically staked to solid aluminum, internal corner keys, and sealed with small joint sealer.

Materials

Extrusions shall be of aluminum alloy 6063-T5 extruded within commercial tolerance and free from defects impairing strength and/or durability.

Screws, bolts and all other accessories to be compatible with the aluminum under normal service conditions.

Glazing shall be by means of an open cell, high density, polyurethane foam tape spacer with a one part, high modulus, structural silicone sealant.

Weathering consists of double Santoprene bulb gasket between sash and frame, plus exterior neoprene wiper, continuous at perimeter.

Thermal barrier shall be a two part chemically curing, unfilled polyurethane casting resin poured in place for perimeter members.

Finish

All exposed framing surfaces shall be free of scratches and other serious blemishes.

Finish to be: (architect select)

Etched and clear anodized

(AAM12C22A31)

Clear - Class 2 (OA)

(AAM12C22A41)

Clear - Class 1 (2A)

Electrolytically deposited color

(AAM12C22A44) Class 1

Champagne (4K)

Light Amber (2K)

Amber (1K)

Statuary Bronze(3K)

Black (OD)

Fluoropolymer painted color

Execution

Installation

Installation shall be in accordance with the manufacturer's installation instructions and the approved shop drawings.

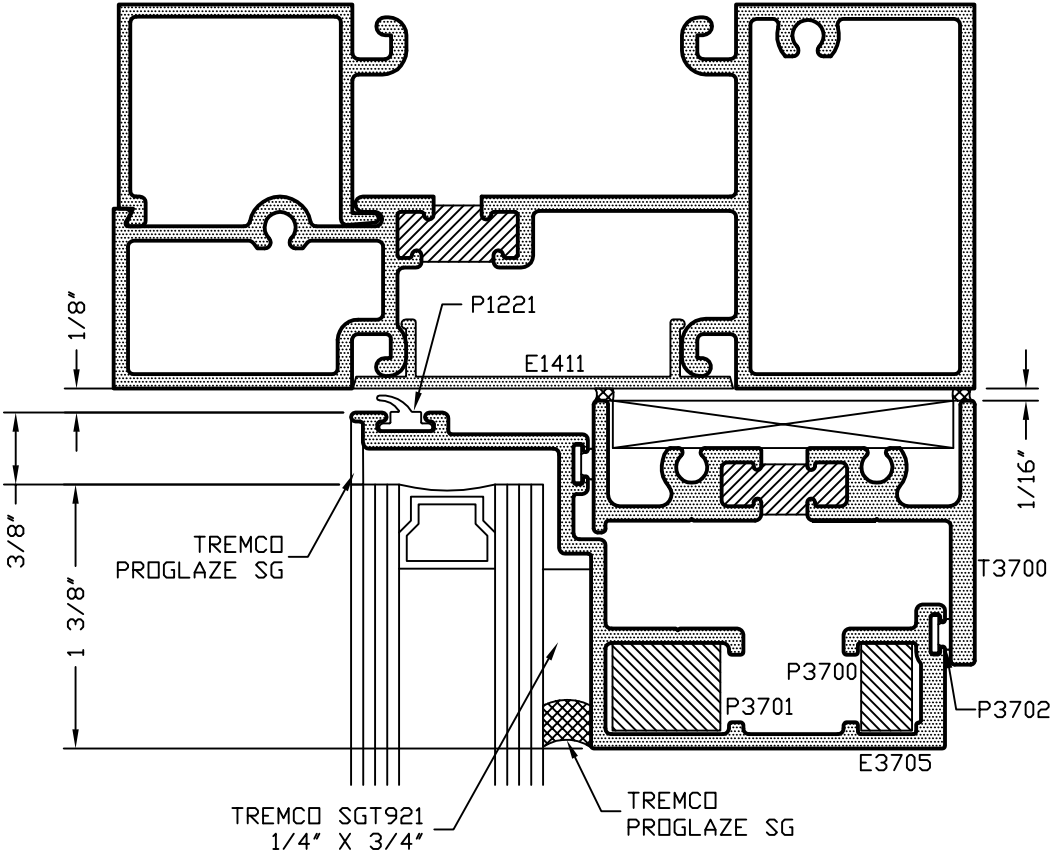
Note:

All specifications are subject to change without written notice by the manufacturer.

Vent Window

Concealed Vent Window Head - T14000 Series

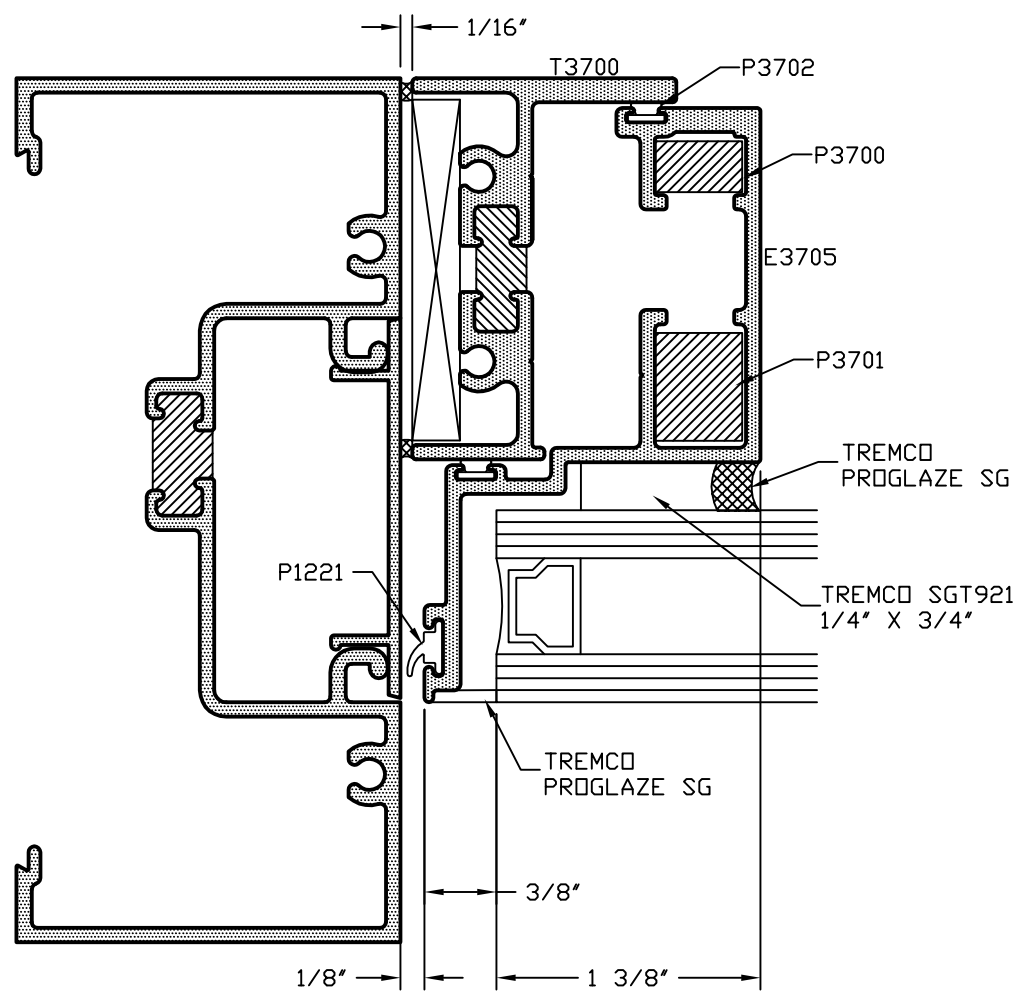
CAD DETAIL FILE NO.
120HEAD3



Vents

Concealed Vent Window Jamb - T14000 Series

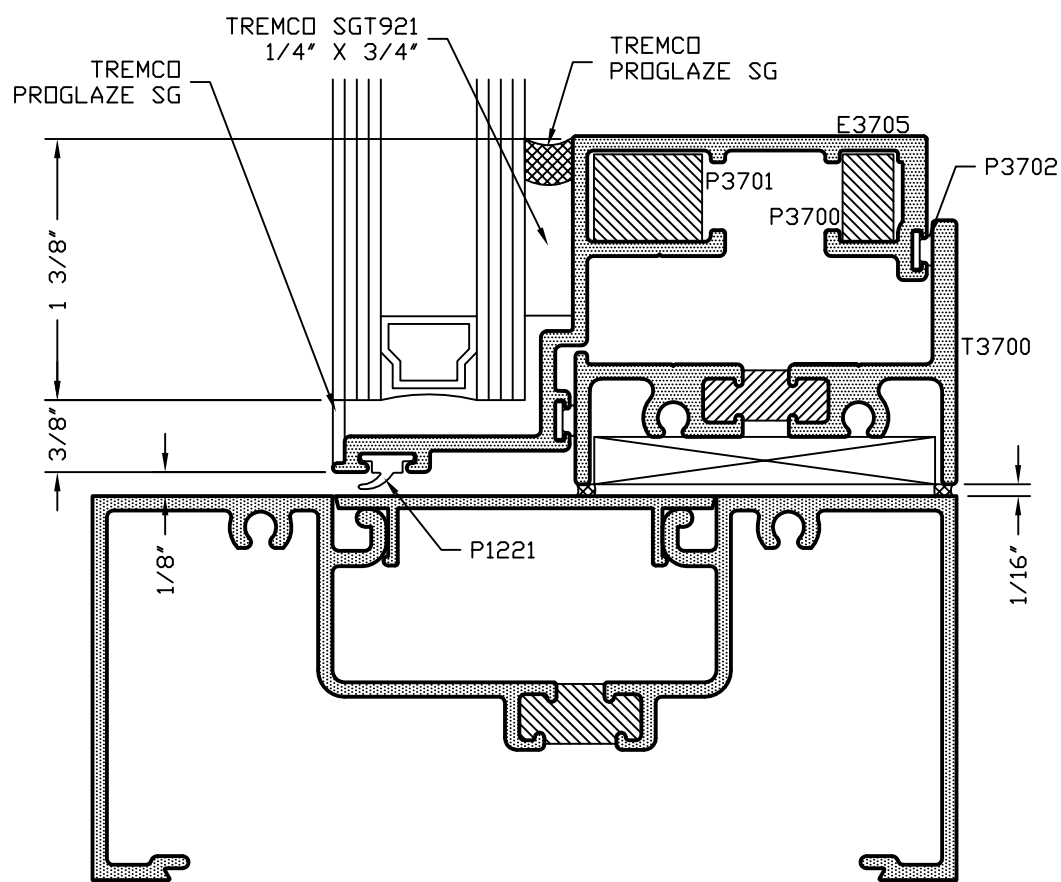
CAD DETAIL FILE NO.
120JAMB3



Vents

Concealed Vent Window Sill - T14000 Series

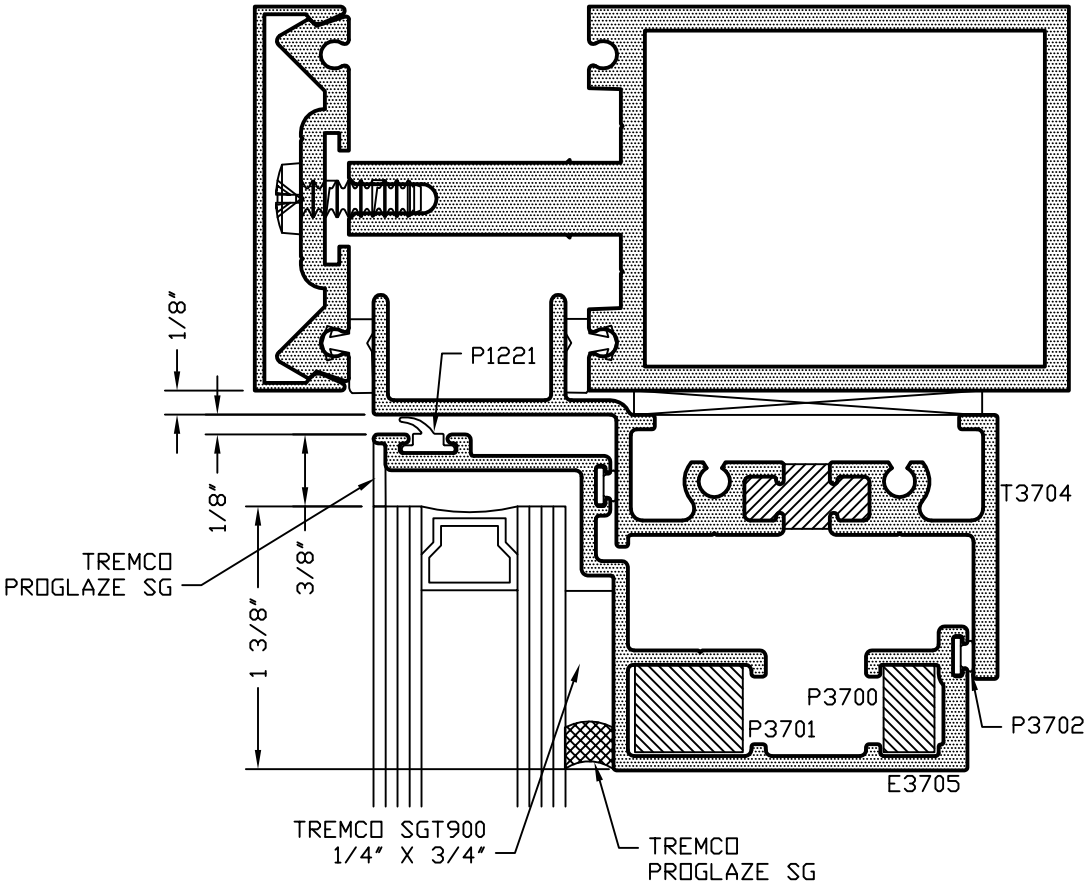
CAD DETAIL FILE NO.
120SILL3



Vents

Concealed Vent Window Head - 200 Series Curtainwall

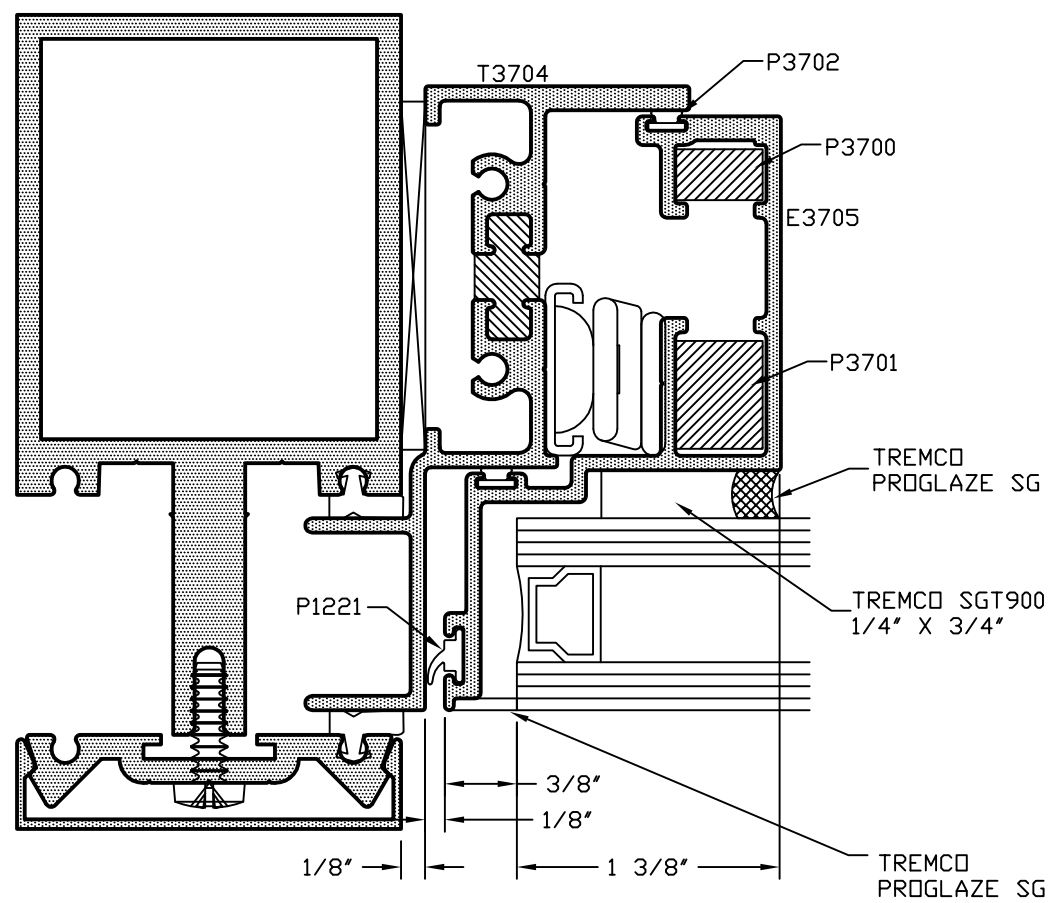
CAD DETAIL FILE NO.
120HEAD2



Vents

Concealed Vent Window Jamb - 200 Series Curtainwall

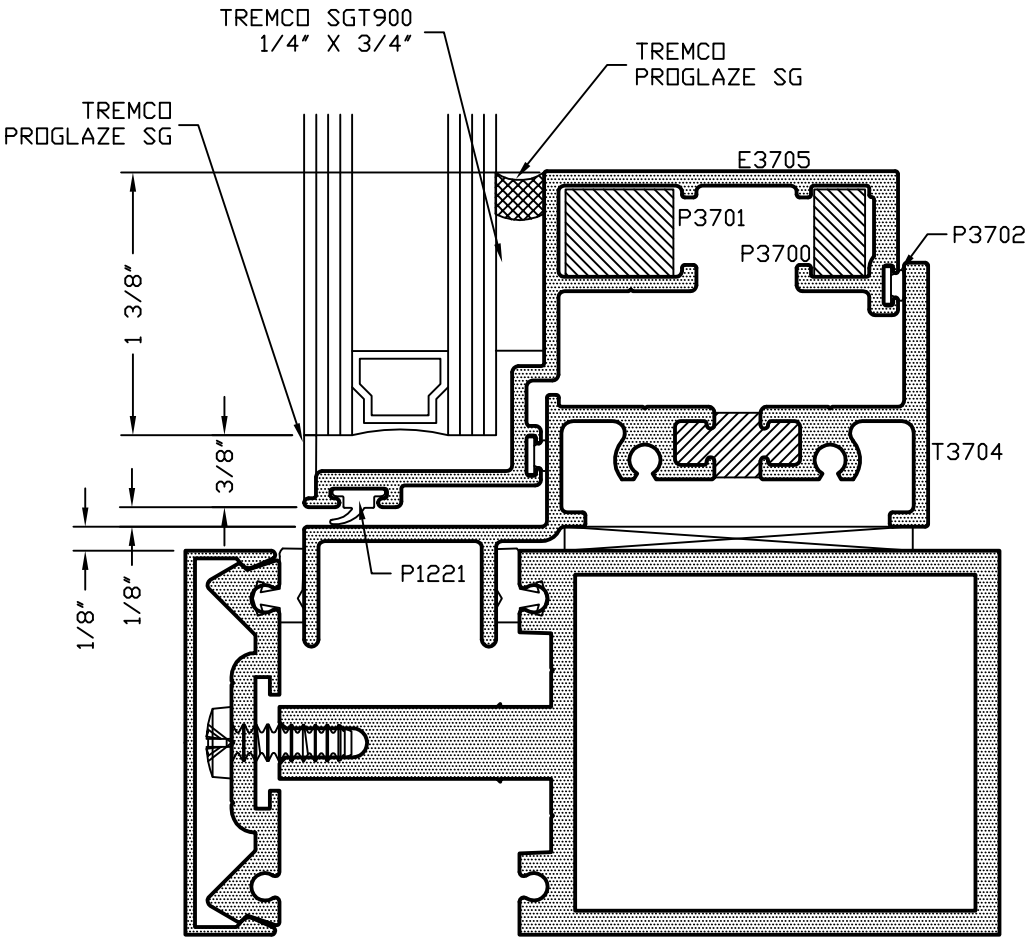
CAD DETAIL FILE NO.
120JAMB2



Vents

Concealed Vent Window Sill - 200 Series Curtainwall

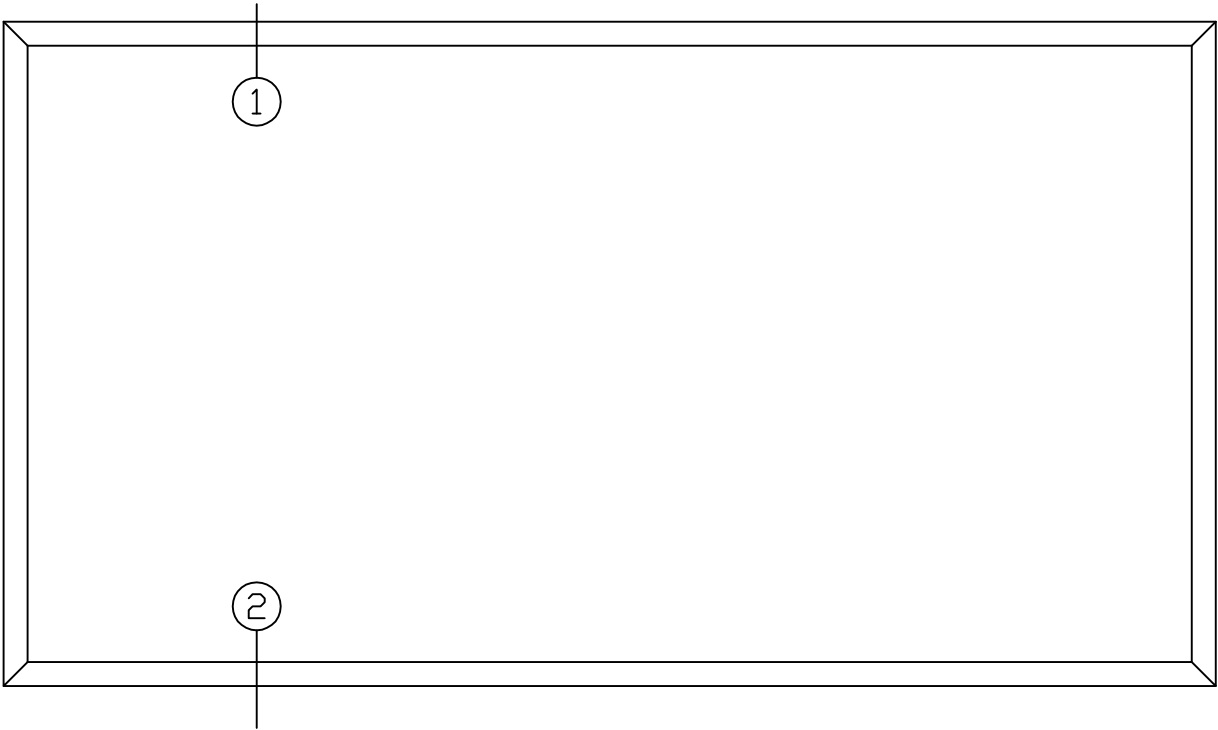
CAD DETAIL FILE NO.
120SILL2



Concealed Vent Windows

Screen Detail - 1/2 Scale

CAD DETAIL FILE NO.
120SCREEN



INTERIOR ELEVATION

