

CW 3700

Casement Window

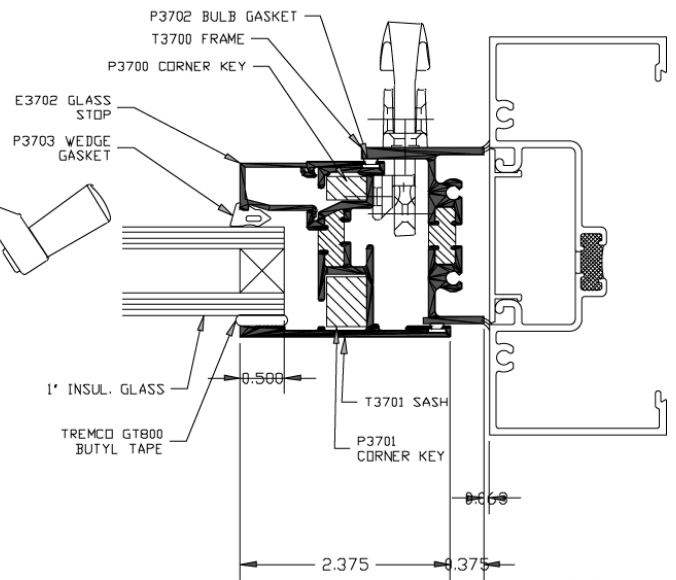
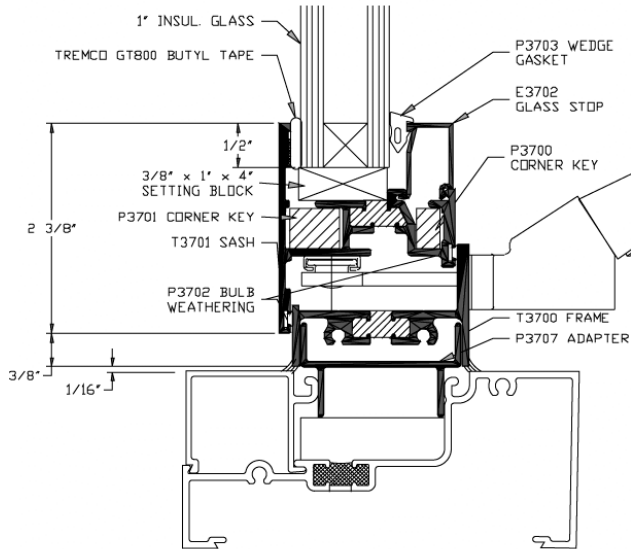
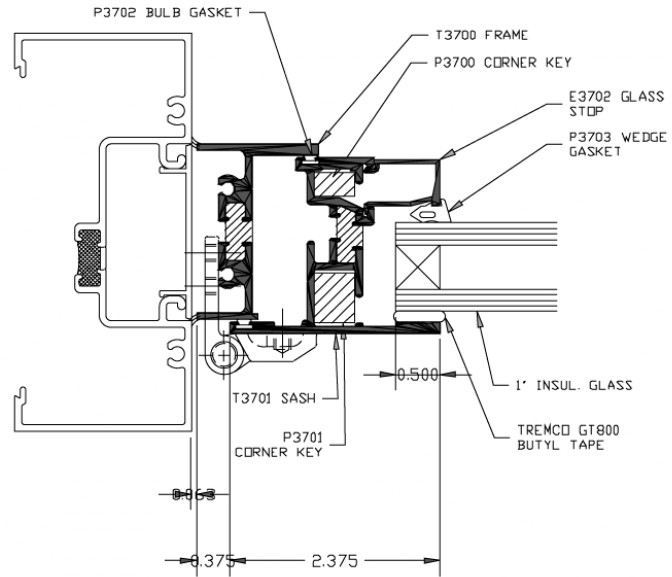
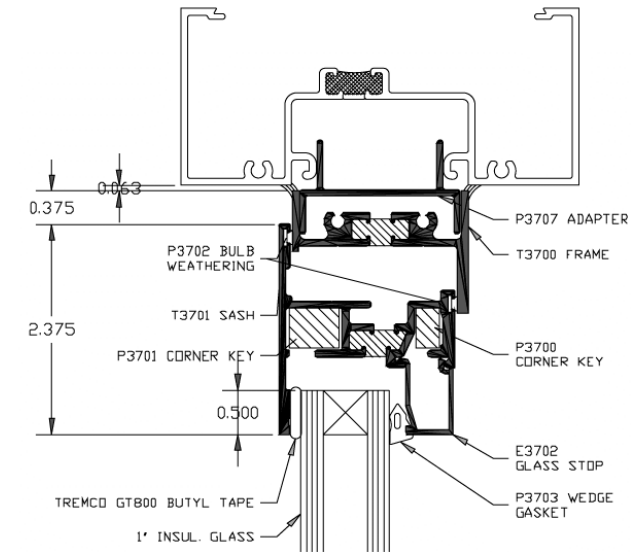


Features:

- ANSI/AAMA HC60, AW60
- Life Cycle Tested
- 2" Frame Depth
- Screw-Spline Frame Joinery
- Mitered Clip, epoxy and Stake Joinery
- Pour & Debridge Thermal Break
- Field Glazing
- EPDM Gaskets
- 1" or 1/4" Glass Thickness
- Aluminum glass Stops
- Black or Clear hardWare
- Heavy Duty Butt Hinges
- Equal Frame Legs
- Anodized & Painted Finishes
- Optional Aluminum Screens with Frame finished to match window



1/2 Size Details



CW3700 – Casement Window

Guide Specifications

General

Description

Furnish all necessary materials, labor and equipment for the complete installation of aluminum windows as shown on the drawings and specified herein.

Casement windows shall be CW3700 (2 3/8" x 2 1/4") as manufactured by EZ Vent LLC in Rockford Michigan. Whenever substitute products are to be considered, supporting technical literature, samples drawings and performance data must be submitted ten (10) days prior to bid in order to make a valid comparison of the products involved.

Test reports certified by an independent laboratory must be made available upon request.

Performance Requirements

Air infiltration shall not exceed .10 CFM/Ft² when tested in accordance with ASTM E-283 at a test pressure of 6.24 PSF.

There shall be no uncontrolled water entry when tested in accordance with ASTM E-331 "Water Penetration of Exterior Windows, Curtainwalls and Doors by Uniform Static Air Pressure Difference" at a test pressure of 12 PSF.

Structural performance per ASTM E-330 shall be based on a maximum allowable deflection of L/175 of the span. The system shall perform to those criteria under a design test pressure of 60 PSF.

Windows shall meet the performance specification AAMA/NWDA 101/I.S.2-97 requirements for AW-60 and HC-60 ratings.

Products

Construction

The 2" deep, standard equal-leg frame is fabricated from extruded aluminum, with .125" minimum wall thickness. Joints are coped, double screw fastened, and sealed with small joint sealer.

The sash is fabricated from extruded aluminum, with .075" minimum wall thickness. Mitered hairline joints are mechanically staked to solid aluminum, internal corner keys, and sealed with small joint sealer.

Glass stops are 3/4" high and can accept either 1" or 1/4" glazing material.

Materials

Extrusions shall be of aluminum alloy 6063-T5 extruded within commercial tolerance and free from defects impairing strength and/or durability.

Screws, bolts and all other accessories to be compatible with the aluminum under normal service conditions.

Glazing shall be by means of an open cell, high density, polyurethane foam tape spacer with a one part, high modulus, structural silicone sealant.

Weathering consists of double Santoprene bulb gasket between sash and frame, plus exterior neoprene wiper, continuous at perimeter.

Thermal barrier shall be a two part chemically curing, unfilled polyurethane casting resin poured in place for perimeter members.

Finish

All exposed framing surfaces shall be free of scratches and other serious blemishes.

Finish to be: (architect select)

Etched and clear anodized

(AAM12C22A31)

Clear - Class 2 (OA)

(AAM12C22A41)

Clear - Class 1 (2A)

Electrolytically deposited color

(AAM12C22A44) Class 1

Champagne (4K)

Light Amber (2K)

Amber (1K)

Statuary Bronze(3K)

Black (OD)

Fluoropolymer painted color

Execution

Installation

Installation shall be in accordance with the manufacturer's installation instructions and the approved shop drawings.

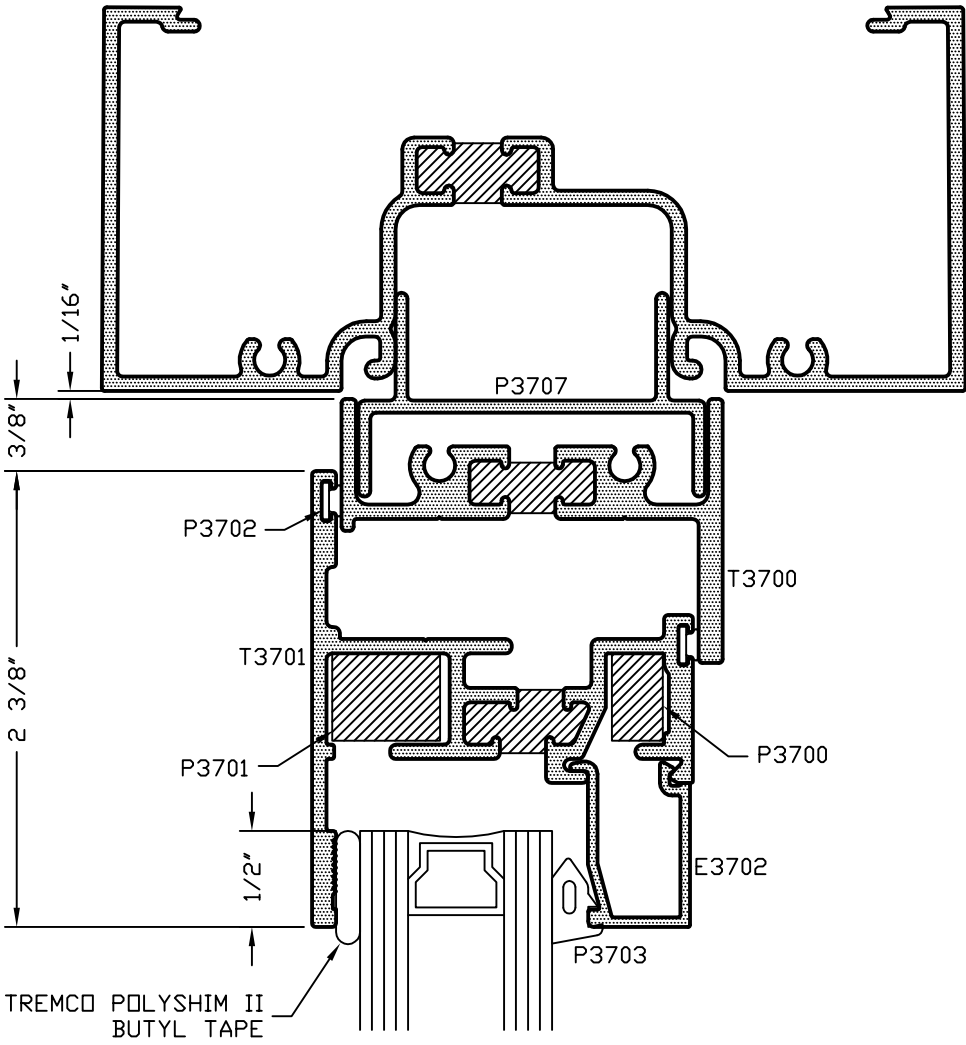
Note:

All specifications are subject to change without written notice by the manufacturer.

Vents

Casement and Vent Window Head - T14000 Series

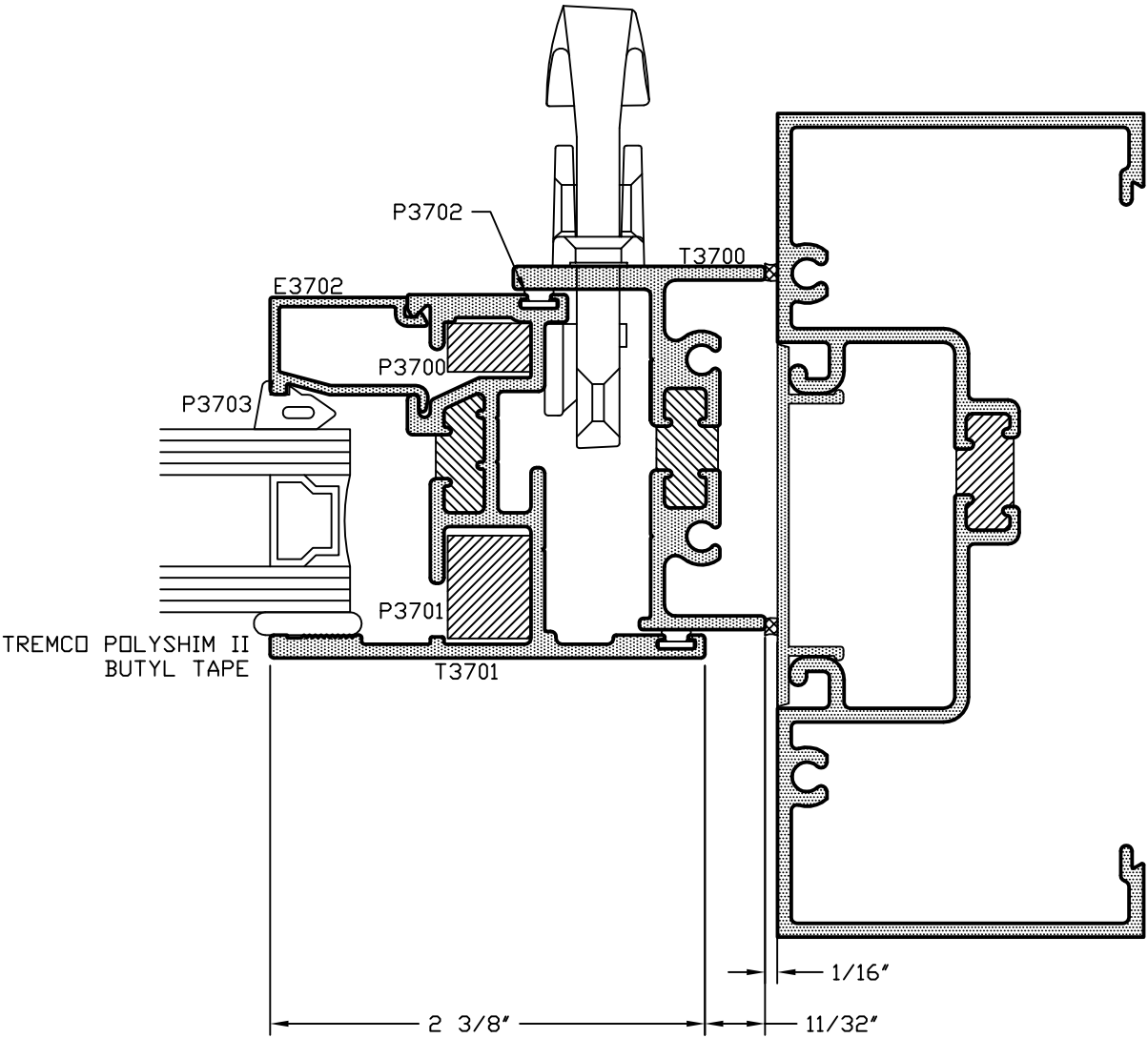
CAD DETAIL FILE NO.
120HEAD1



Vents

Casement Lock Jamb

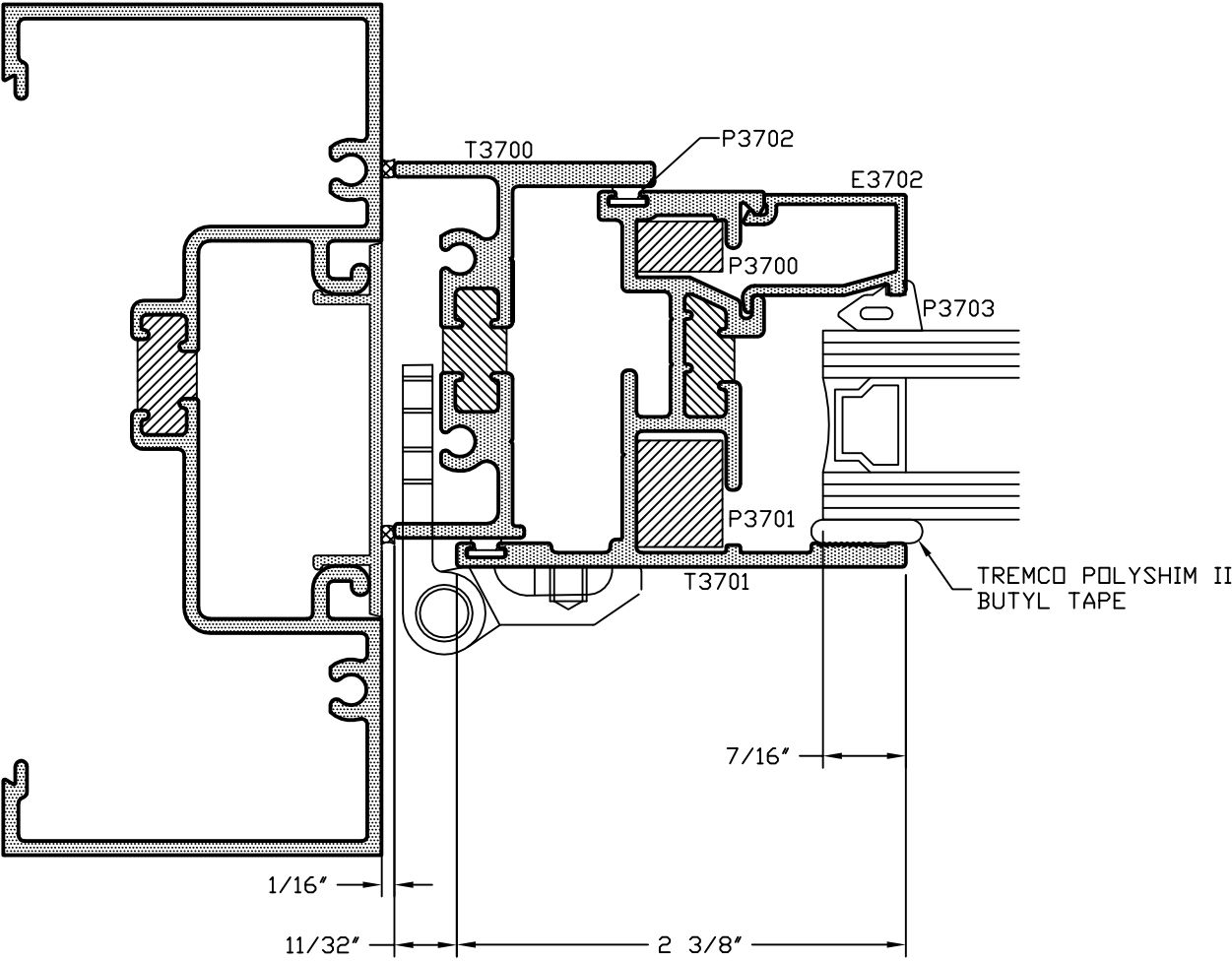
CAD DETAIL FILE NO.
120JAMB6



Vents

Conventional Casement Hinge Jamb

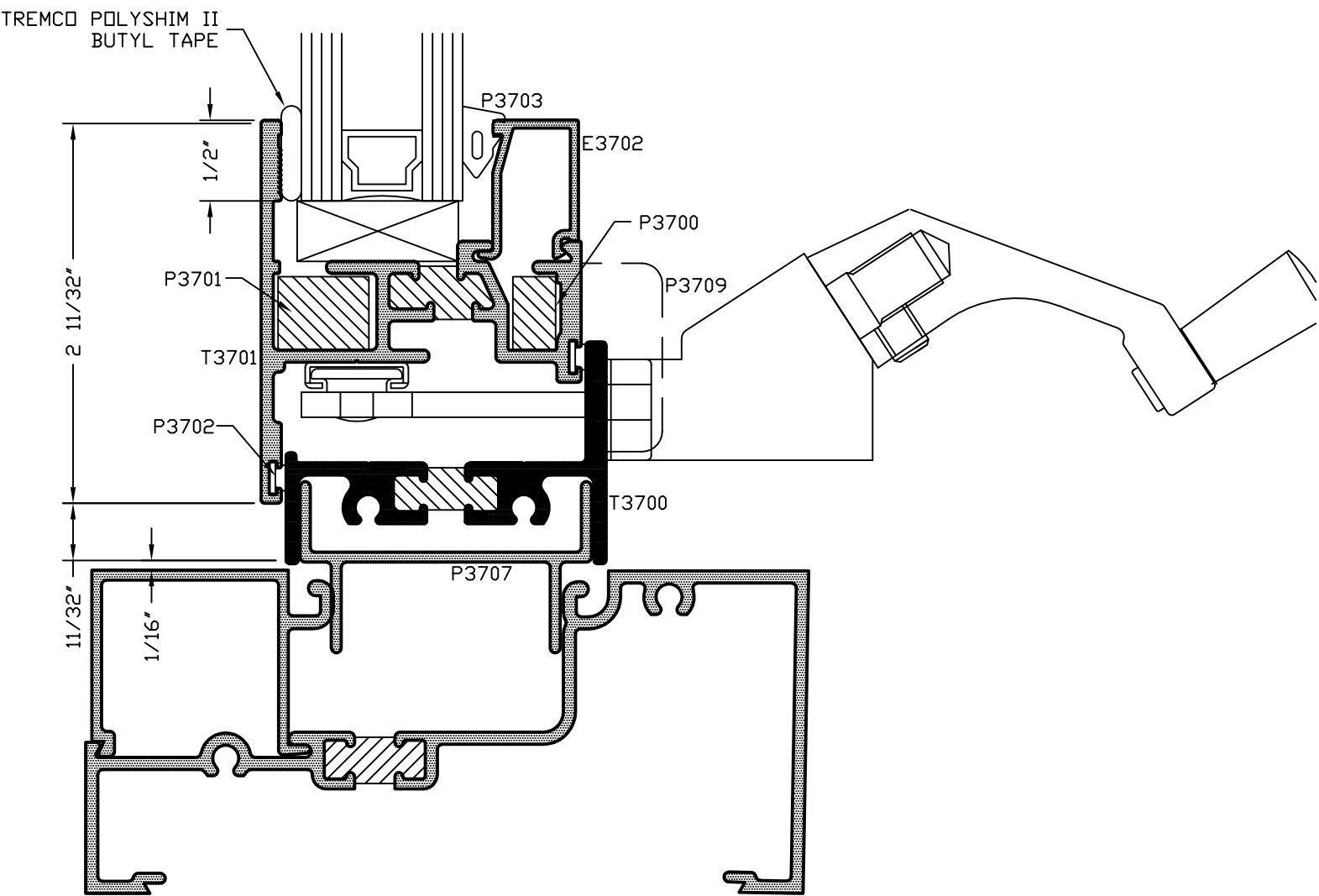
CAD DETAIL FILE NO.
180JAMB5



Vents

Casement Window Sill - T14000 Series

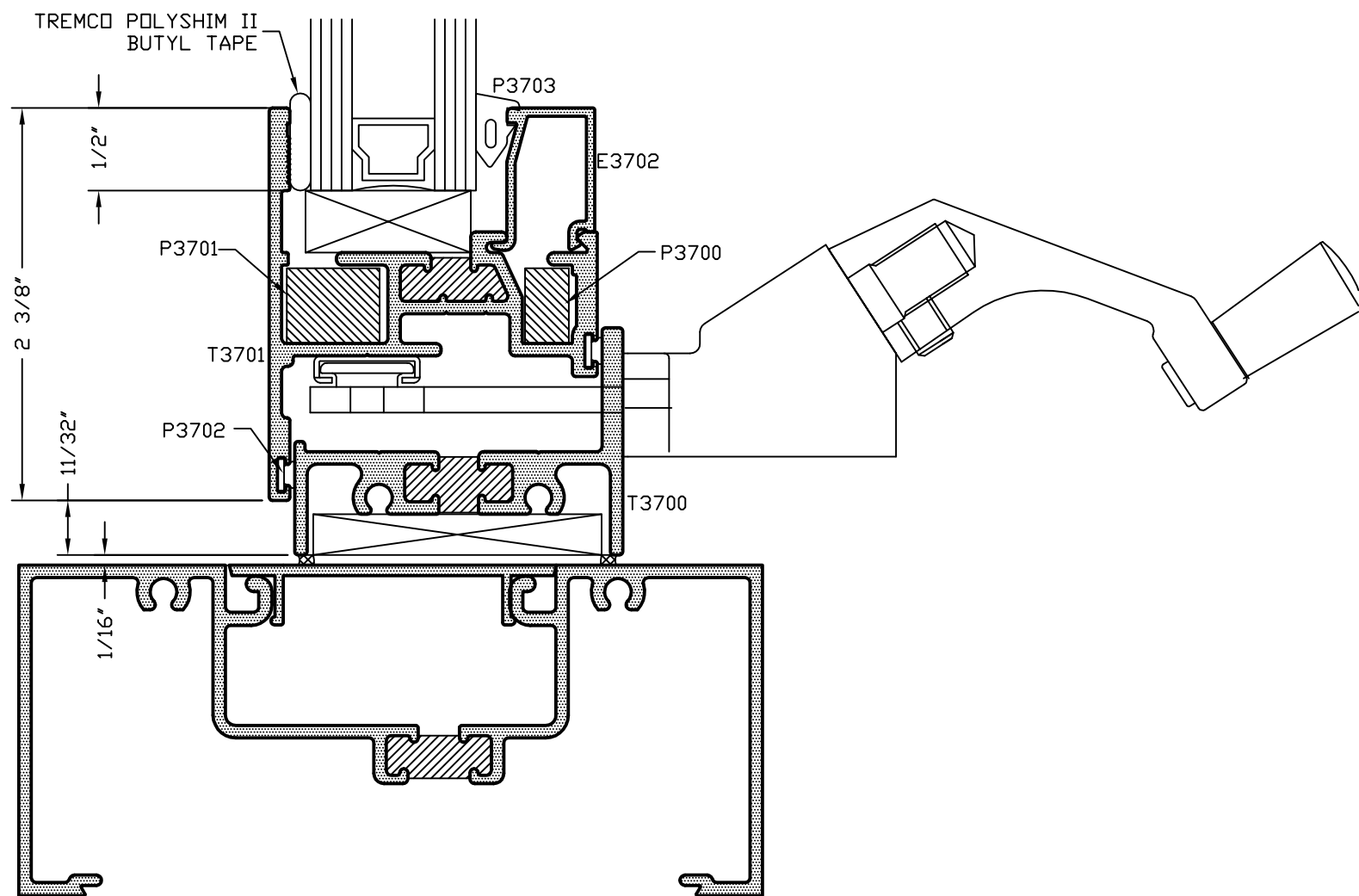
CAD DETAIL FILE NO.
120SILL5



Vents

Casement Window Sill - T14000 Series

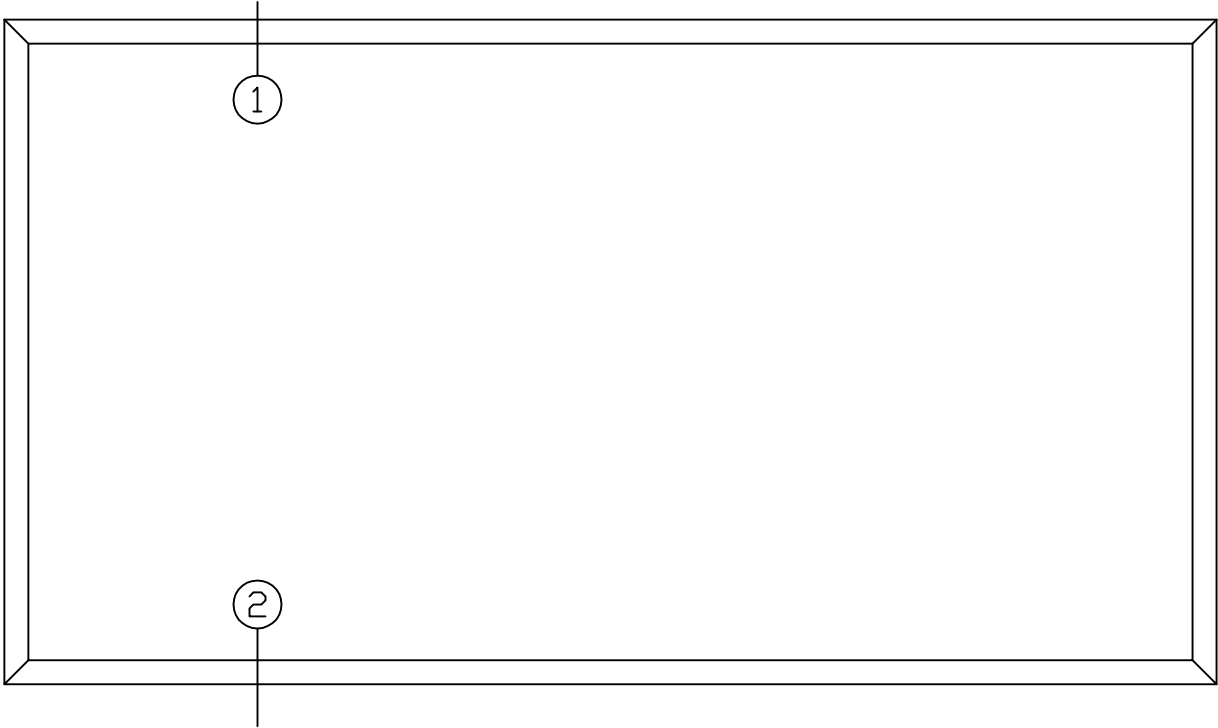
CAD DETAIL FILE NO.
120SILL6



Concealed Vent Windows

Screen Detail - 1/2 Scale

CAD DETAIL FILE NO.
120SCREEN



INTERIOR ELEVATION

